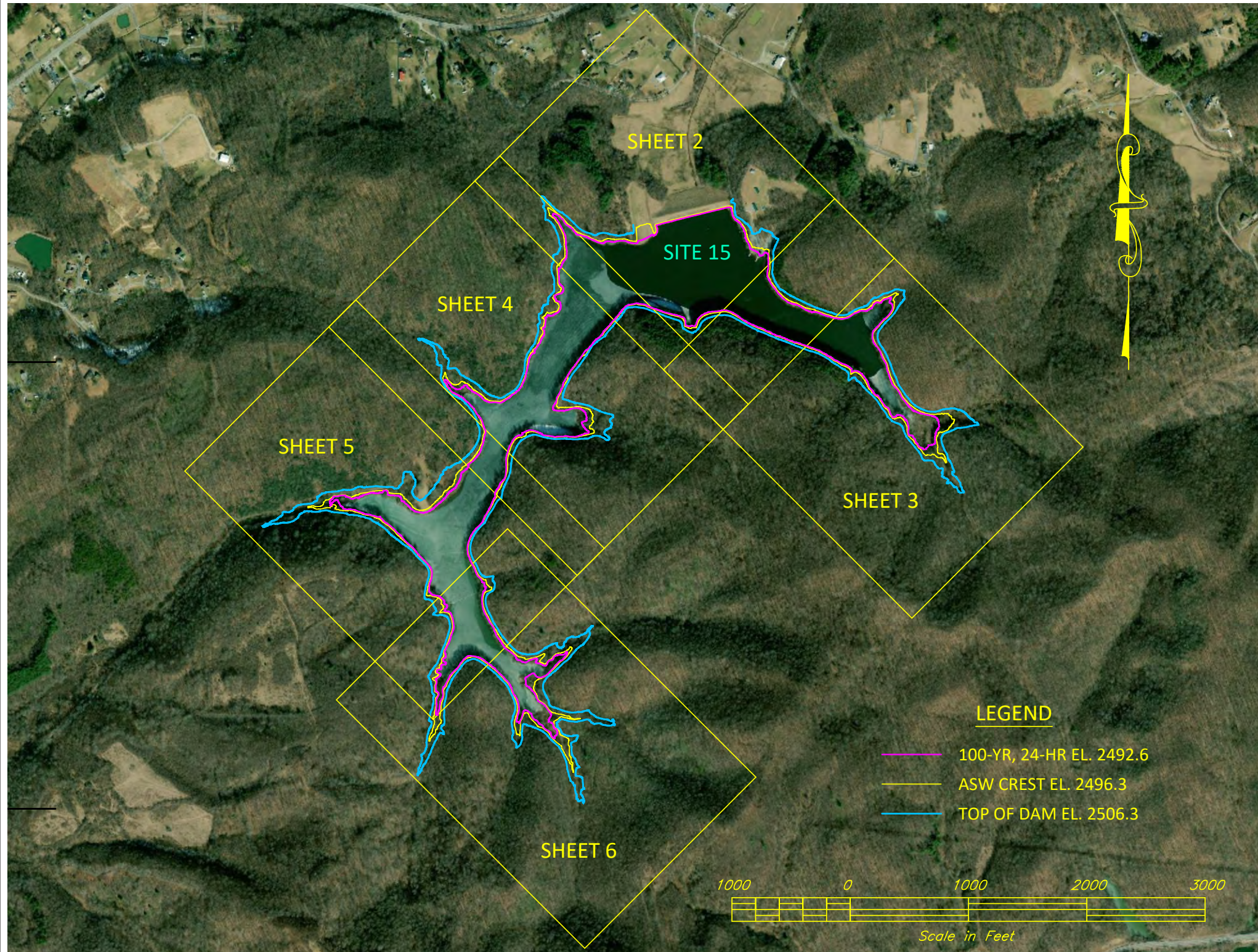


BRUSH CREEK WATERSHED REHABILITATION PROJECT

MULTIPLE PURPOSE DAM NO.15

MERCER COUNTY, WEST VIRGINIA

LANDRIGHTS WORK MAP



Notes:

In accordance with the National Watershed Program Manual, the Sponsoring Local Organization (SLO) is encouraged to acquire landrights upstream of the dam for the entire area below the elevation of the maximum water surface during passage of the probable maximum flood (PMF) event. As a minimum, landrights must be acquired to an elevation no lower than the maximum water surface elevation during passage of the 100-year, 24-hour storm through the dam or the minimum elevation determined to be appropriate and approved in the watershed plan, whichever is higher. At Site 15, the minimum landrights required are for the 100-yr, 24-hr. storm.

This map illustrates the parcel boundaries, Top of Dam, ASW crest, and 100-yr, 24-hr. elevations using the most current available GIS and elevation (QL2 lidar) data.

Sponsors should use this map to assist in identification of the potential landrights necessary.

Sponsors will need to field verify property boundary locations and surface elevations to ensure the minimum landrights are acquired.

Temporary construction and access easements have not been identified at this time. Once identified, these will be added to this work map and sponsors will be required to obtain temporary easements for construction.

The auxiliary spillway (ASW) crest elevation is shown for reference. This elevation has been used in the past for required landrights.

The induced flooding area downstream requiring landrights are areas above the 100-yr, 24-hr. storm without the dam in place. At Site 15, there are no areas downstream that require landrights, however it is recommended that sponsors obtain landrights for the auxiliary spillway flow area. This area will be added to the work map once available.

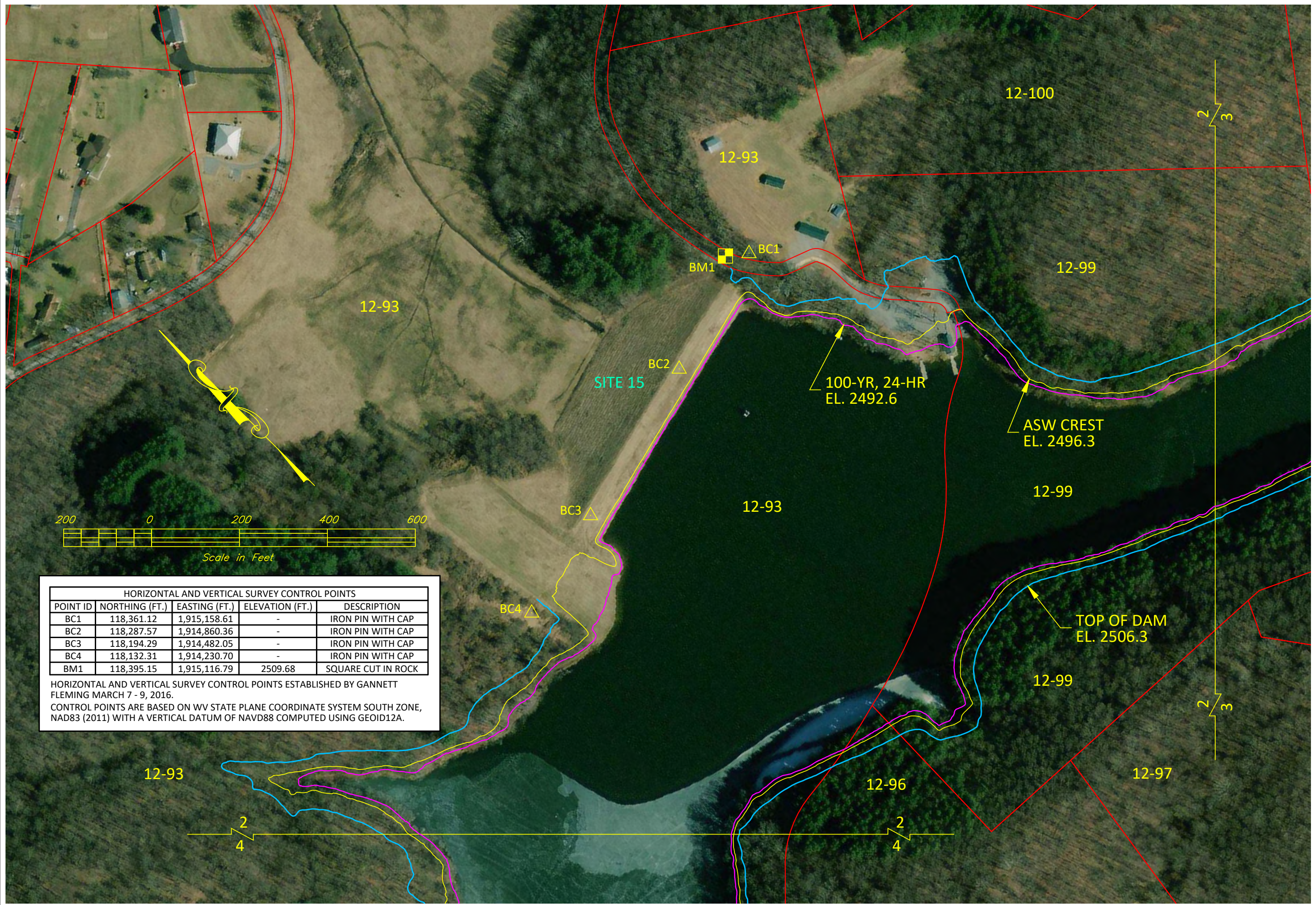
Designed:	Date:
Drawn: 7. Sites	11/2021
Checked:	
Approved:	

BRUSH CREEK 15
LANDRIGHTS WORK MAP
PLAN VIEW 1



File No.
Brush Creek
15.dwg

Drawing No.



HORIZONTAL AND VERTICAL SURVEY CONTROL POINTS

POINT ID	NORTHING (FT.)	EASTING (FT.)	ELEVATION (FT.)	DESCRIPTION
BC1	118,361.12	1,915,158.61	-	IRON PIN WITH CAP
BC2	118,287.57	1,914,860.36	-	IRON PIN WITH CAP
BC3	118,194.29	1,914,482.05	-	IRON PIN WITH CAP
BC4	118,132.31	1,914,230.70	-	IRON PIN WITH CAP
BM1	118,395.15	1,915,116.79	2509.68	SQUARE CUT IN ROCK

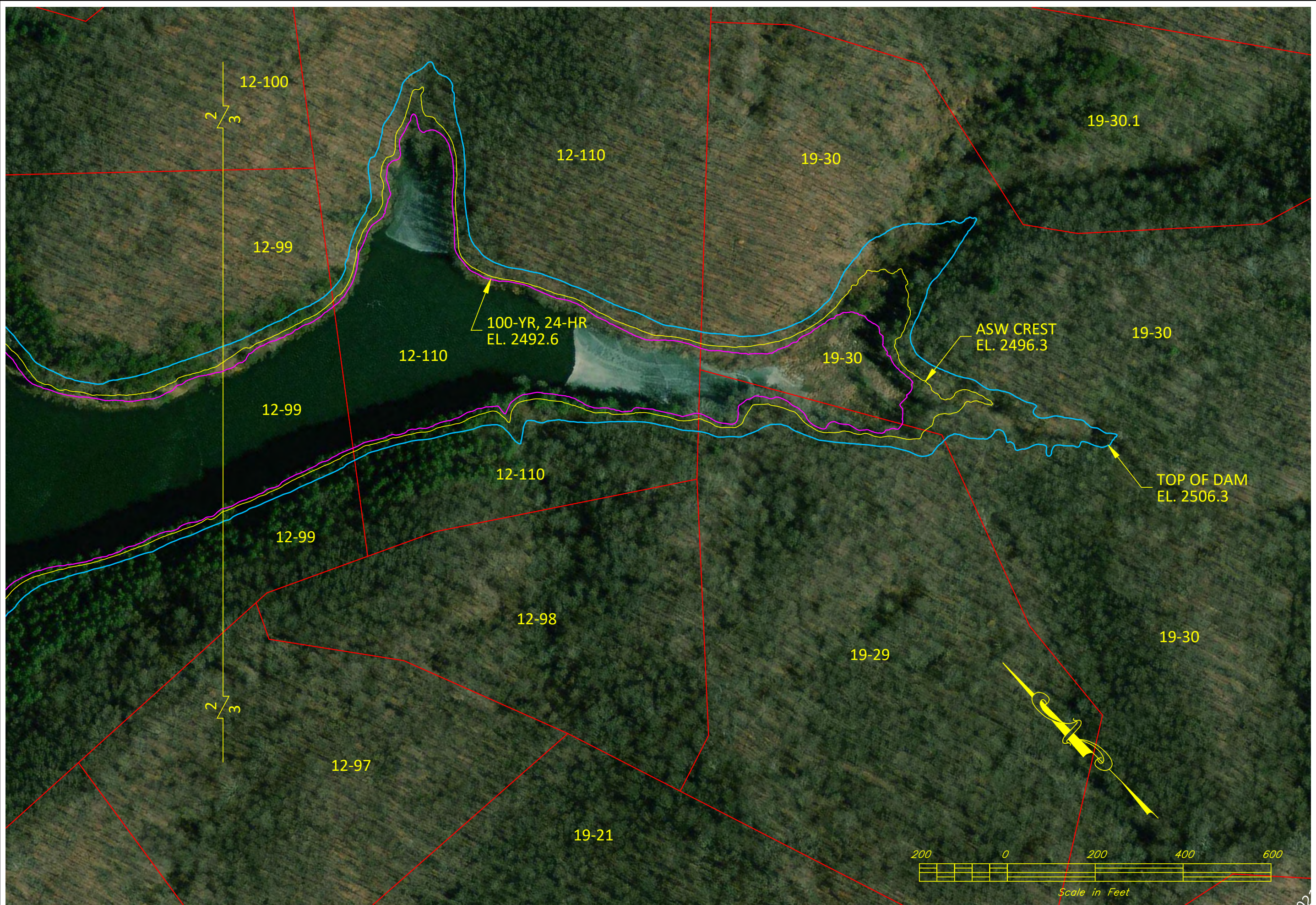
HORIZONTAL AND VERTICAL SURVEY CONTROL POINTS ESTABLISHED BY GANNETT FLEMING MARCH 7 - 9, 2016.
 CONTROL POINTS ARE BASED ON WV STATE PLANE COORDINATE SYSTEM SOUTH ZONE, NAD83 (2011) WITH A VERTICAL DATUM OF NAVD88 COMPUTED USING GEOID12A.

Date: _____
 Designed: _____
 Drawn: 7. Sites
 Checked: _____
 Approved: _____

BRUSH CREEK 15
LANDRIGHTS WORK MAP
PLAN VIEW 2



File No. Brush Creek 15.dwg
 Drawing No. _____
 Sheet 2 of 6



Designed:	Date:
Drawn: 7. Sites	11/2021
Checked:	
Approved:	

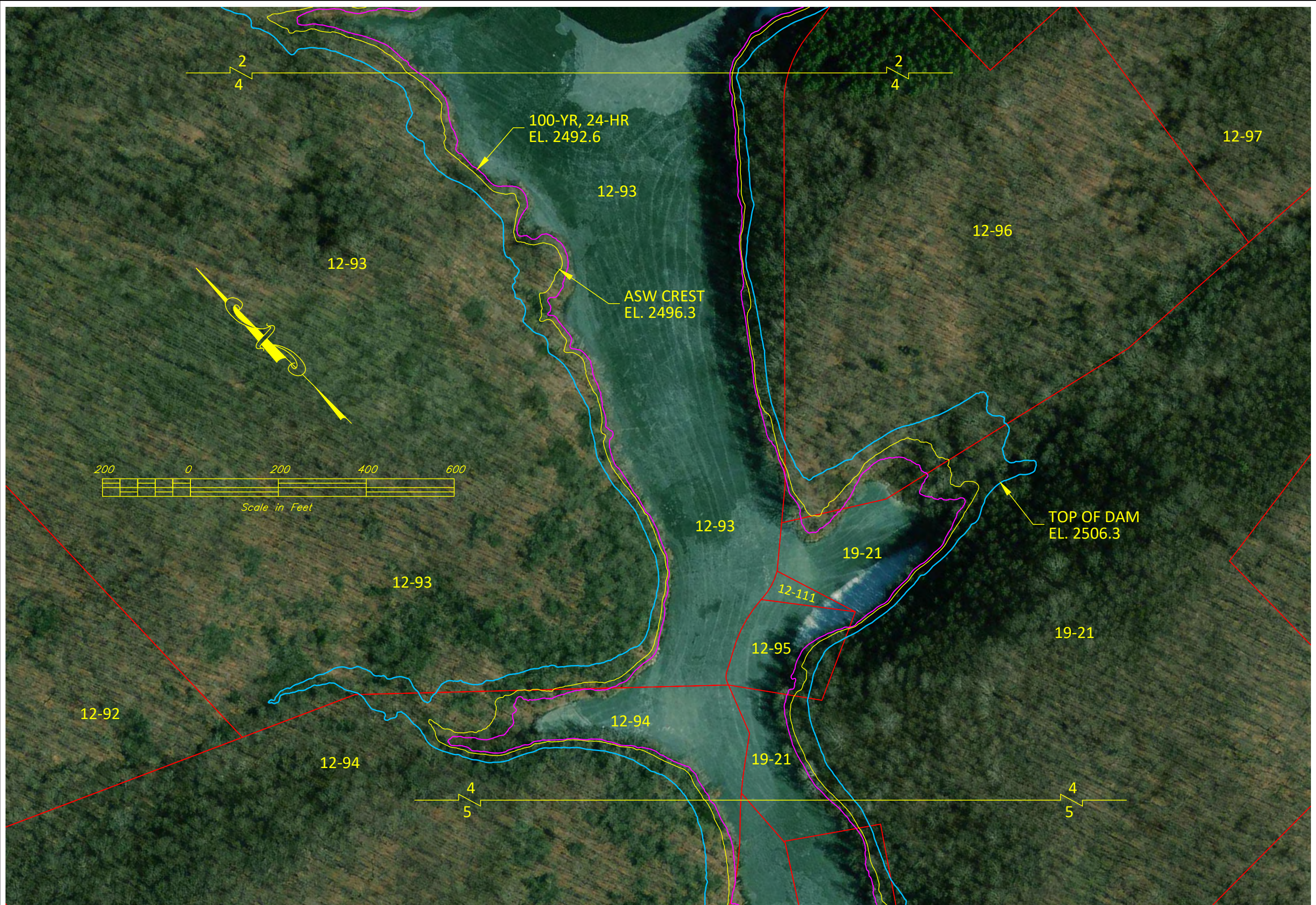
BRUSH CREEK 15
LANDRIGHTS WORK MAP
PLAN VIEW 3



File No.
Brush Creek
15.dwg

Drawing No.
.

Sheet 3 of 6

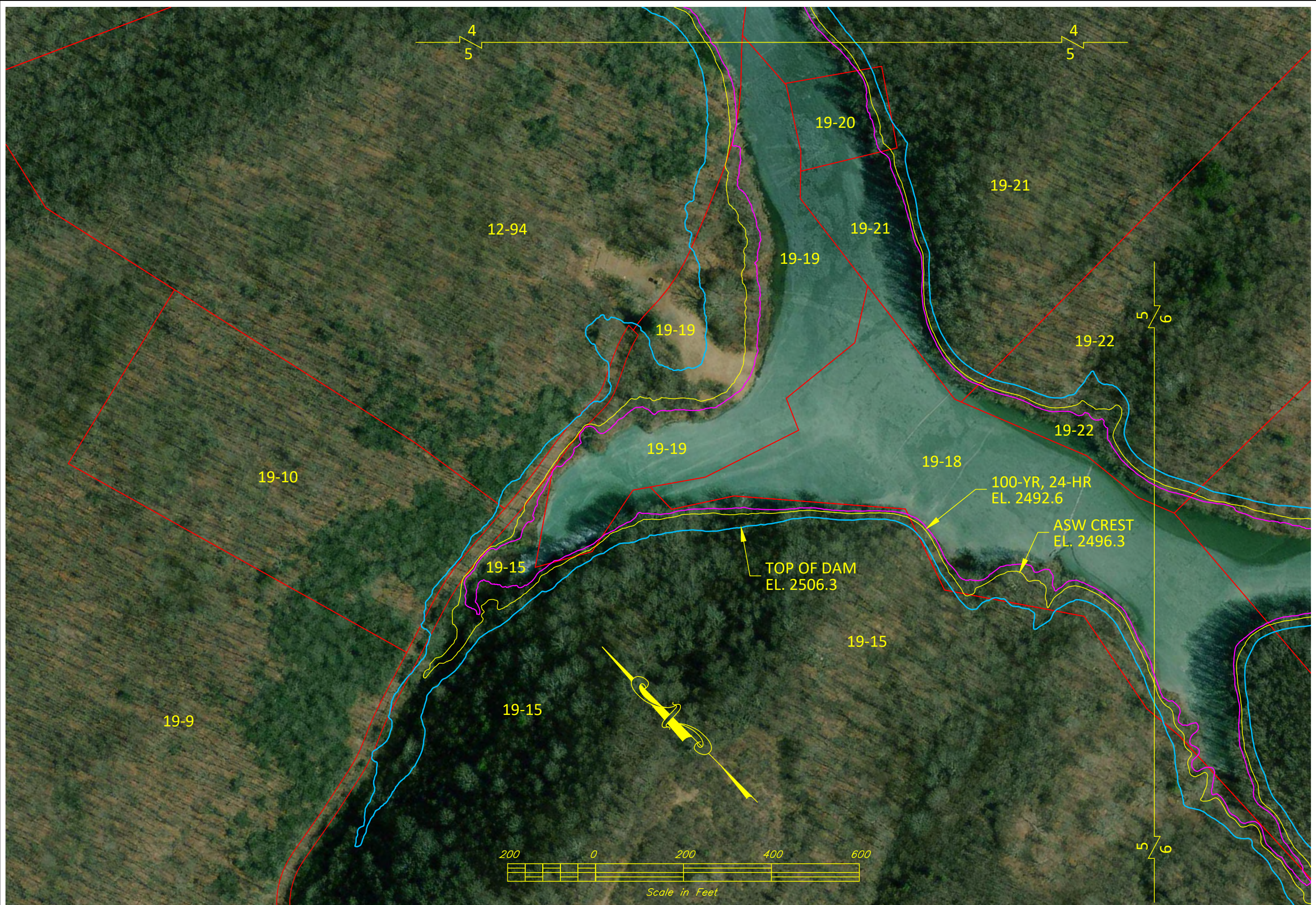


Designed:	Date:
Drawn: 7 Sites	11/2021
Checked:	
Approved:	

BRUSH CREEK 15
LANDRIGHTS WORK MAP
 PLAN VIEW 4



File No. Brush_Creek 15.dwg
Drawing No. .
Sheet 4 of 6



Designed:	Date:
Drawn: 7 Sites	11/2021
Checked:	
Approved:	

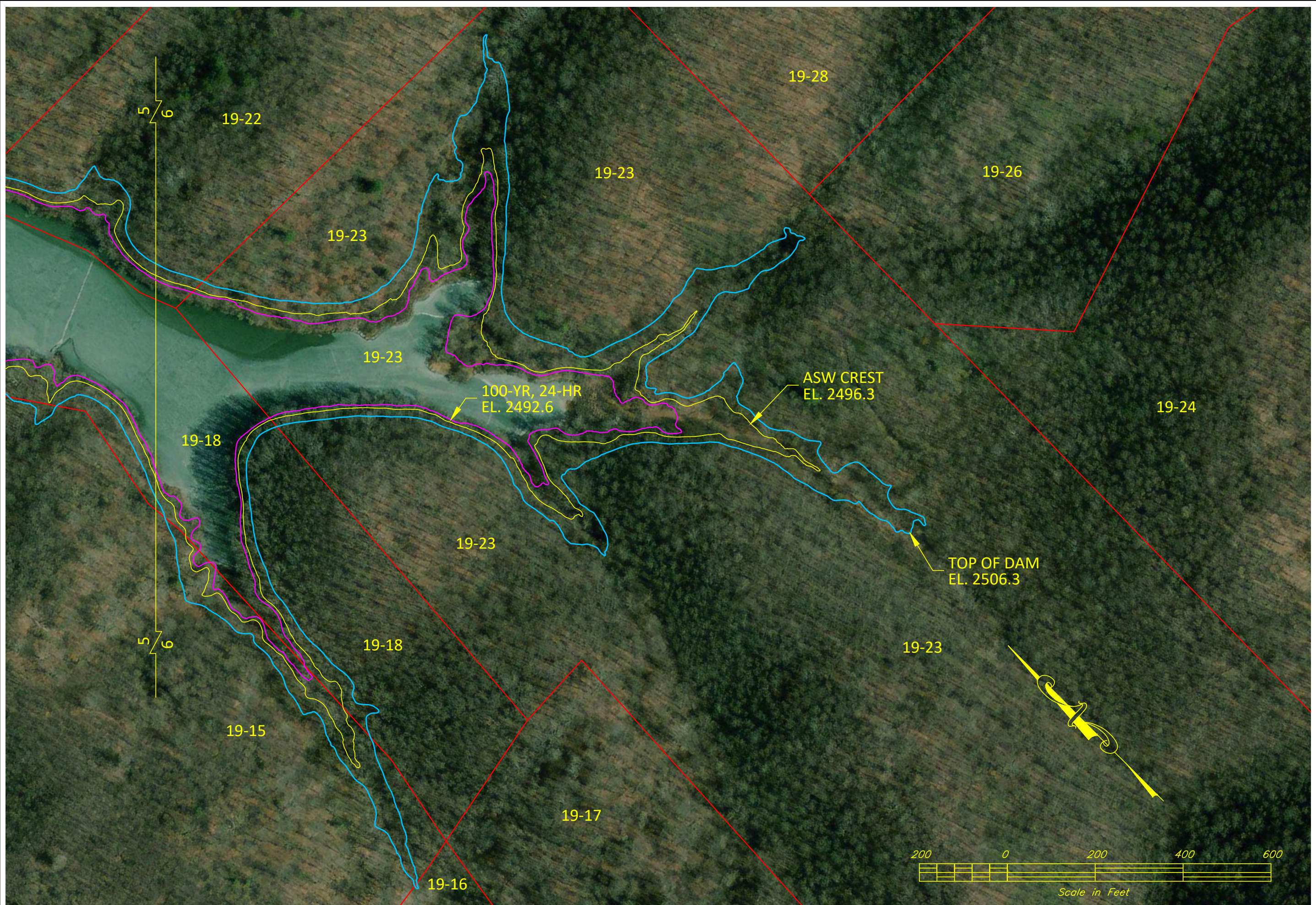
BRUSH CREEK 15
LANDRIGHTS WORK MAP
PLAN VIEW 5



File No.
Brush Creek
15.dwg

Drawing No.
.

Sheet 5 of 6



Designed:	Date:
Drawn: T. Sites	11/2021
Checked:	
Approved:	

BRUSH CREEK 15
LANDRIGHTS WORK MAP
PLAN VIEW 6



File No.
Brush Creek 15.dwg
 Drawing No.
 .
 Sheet 6 of 6

